

STUDENT QUARANTINE PROTOCOL FOR IN-SCHOOL EXPOSURE (TK-12)

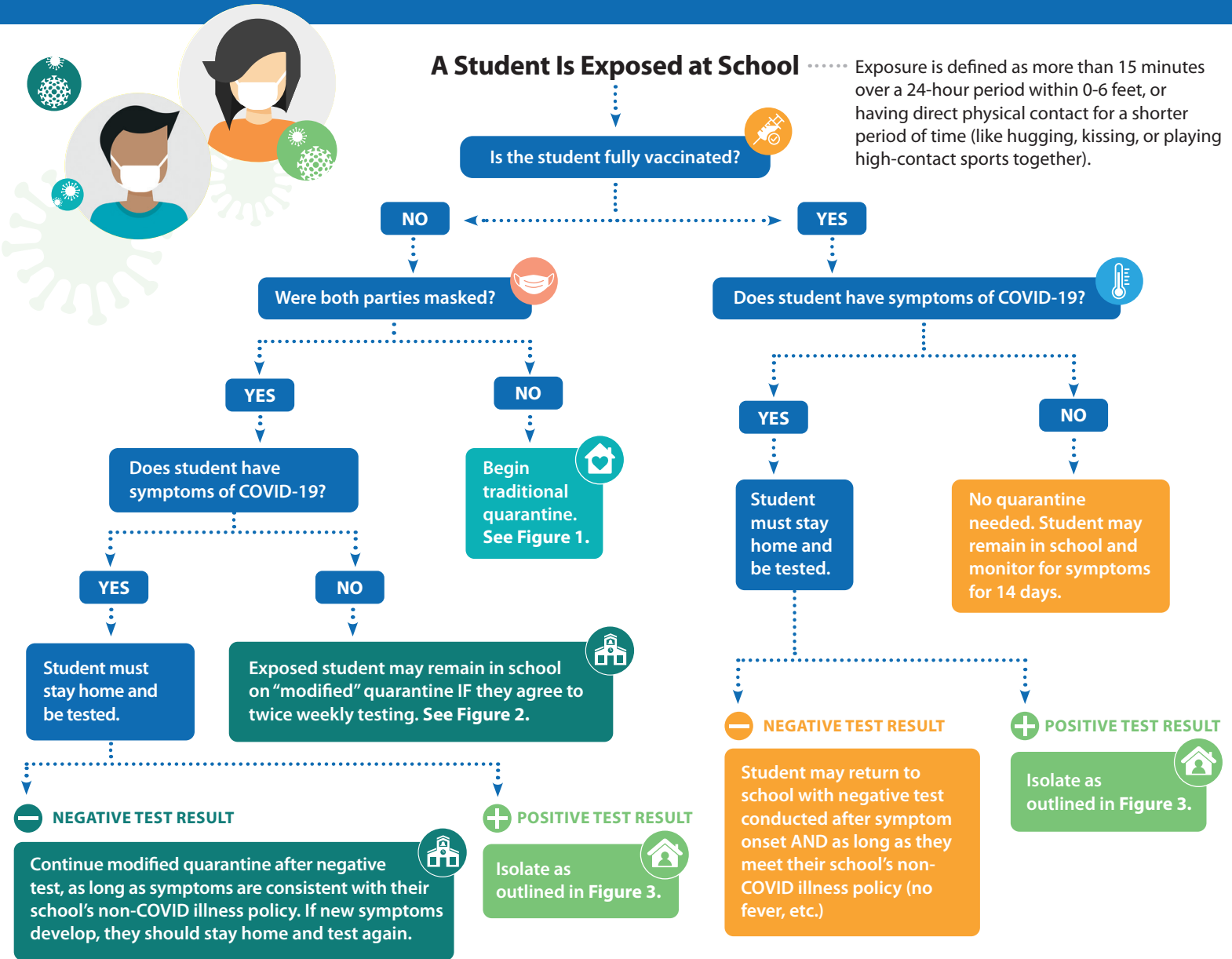


Figure 1

Traditional Quarantine *

- Stay home 10 days after the day of most recent exposure
- If tested day 6 or later, may return to school after day 7 with negative results (full quarantine shortened by 3 days with testing)
- Continue monitoring for symptoms and wearing a mask in all public settings through day 14 after last exposure

Figure 2

Modified Quarantine *

- Continue to come to school IF mask is worn at all times AND student agrees to twice weekly testing for 10 days
- Without 2x weekly testing, student must complete traditional quarantine
- No extracurricular or community activities
- Quarantine ends after day 7 with negative test conducted day 6 or later with no symptoms
- Continue monitoring for symptoms and wearing a mask in all public settings through day 14 after last exposure

Figure 3

Isolation Protocol *

If positive for COVID-19, or symptomatic and declining to test, isolate at home until:

- At least 10 days since symptoms began OR at least 10 days since the date of the first positive COVID-19 PCR test if they have no symptoms
- Fever-free for at least 24 hours without the use of fever-reducing drugs
- Other symptoms have improved

*If anyone develops symptoms, they should remain home and be tested. If they develop symptoms after a negative test was collected, they should stay home and get tested again. Anyone who develops symptoms should receive a negative PCR result and/or an alternate medical diagnosis, OR complete isolation (Figure 3) before returning.

The above flowchart applies only to TK-12 students. Regardless of masking, unvaccinated school staff who are exposed to COVID-19 at work should follow the quarantine guidance set by the most current Sonoma County Health Order. Vaccinated school staff do not need to stay home unless they develop symptoms or test positive.