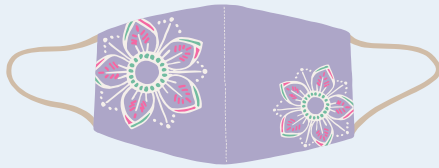


WHAT TYPE OF MASK IS OK?

Sonoma County students and staff will be required*
to wear a face mask with two-ply material.

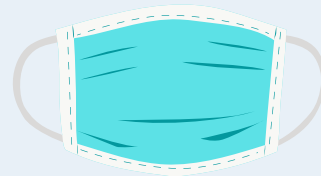
*CDPH exemptions may apply.

APPROVED



Cloth Face Mask

Store-bought, or handmade
cloth masks are allowed as long
as the pattern is appropriate



Disposable Surgical Face Mask

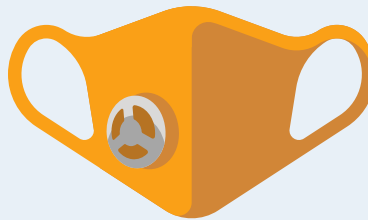
Disposable surgical masks
are recommended as they
are highly effective

NOT APPROVED



Bandanas

Bandanas do not sufficiently
prevent the spread of
respiratory droplets



Masks with Valves

Valves release exhaled
droplets, and do
not protect others



Gaiters

Gaiters do not sufficiently
prevent the spread of
respiratory droplets



Sonoma County
Office of Education